

# Rhizoctonia

**Important diseases:** Brown patch of turf, Belly rot of squash, Damping off, Web blight

*Rhizoctonia* is the most important pathogen worldwide. It causes a variety of different disease including damping-off. Seedling stem canker ("soreshin"), tuber and root rots, leaf blight and rots on vegetables and fruit.



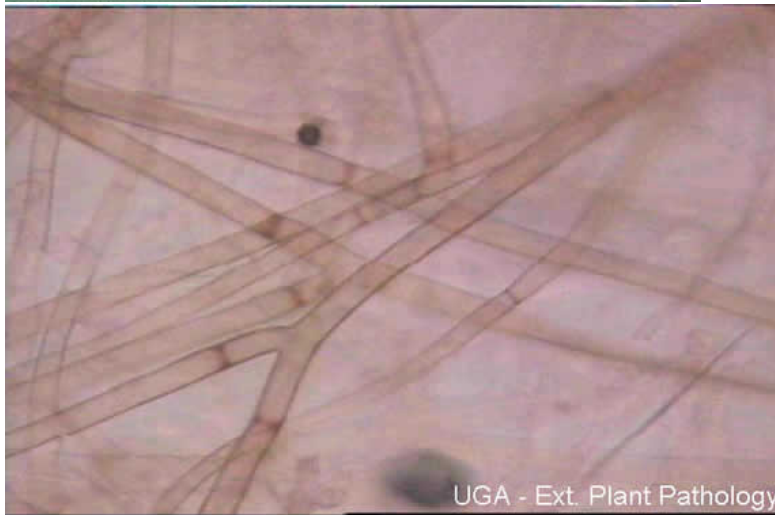
UGA - Ext. Plant Pathology

UGA - Ext. Plant Pathology

UGA - Ext. Plant Pathology



Symptoms vary, but usually affected tissue has brown, round to irregularly shaped spots. Spots may be sunken and "dry" in appearance. Infection is often at the soil line or just below. Under warm, wet conditions, *Rhizoctonia* can cause an aerial or web blight, infecting the interior of densely-growing plants including azaleas and hollies.



*Rhizoctonia* does not produce spores. It exists as mycelium and sclerotia (hardened, overwintering masses of mycelium). The key to identifying *Rhizoctonia* are three characteristics of its septate (with cross walls) hyphae: 1) branches at 90 degree angles, 2) constrictions at the base of the hyphal branching, and 3) clear to tan to light brown color.