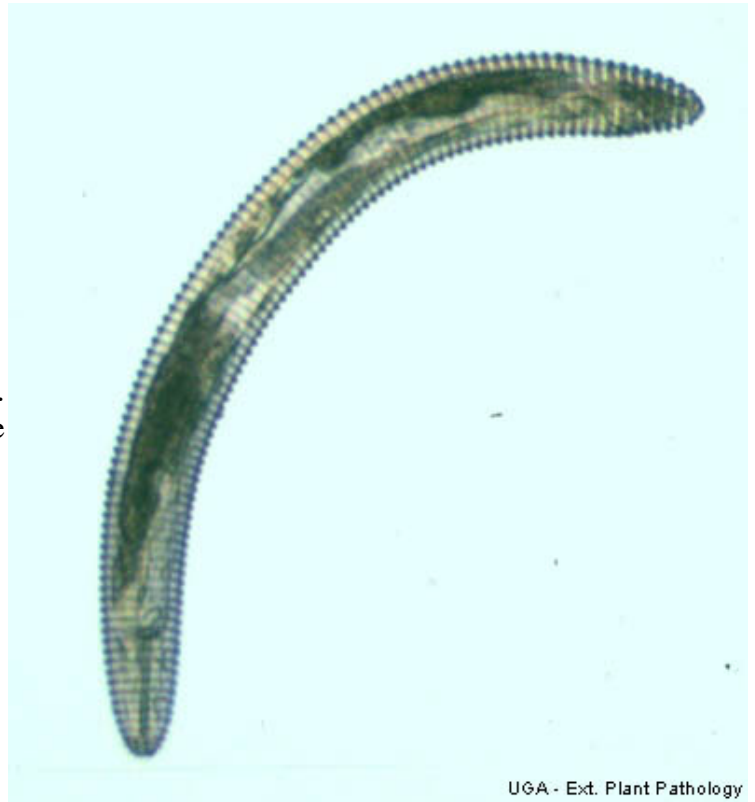


# Ring Nematodes

Ring nematodes, *Criconebella* spp., are widespread and often occur at high population densities. However, symptoms of injury are not consistently associated with high numbers of this nematode. There are three dominant species found in Georgia, each with a slightly different host range. Plants which often support high populations of ring nematodes include peanuts, soybeans, corn, ornamentals, peaches, and centipede and other turf grasses. One species of ring, *C. xenoplax*, has been associated with peach tree short life.

Ring nematodes are rather short and stout with a long stylet. They feed at root tips and along sides of roots but may have the head embedded in root tissue. Larvae and adults are similar in appearance except adults are larger. Research shows that this group of nematodes may be more damaging than formerly thought.



*Richard F. Davis, Extension Nematology, University of Georgia*